

TECNOWOOD II / DUBBEL BEGLAASDE SYSTEEMWAND

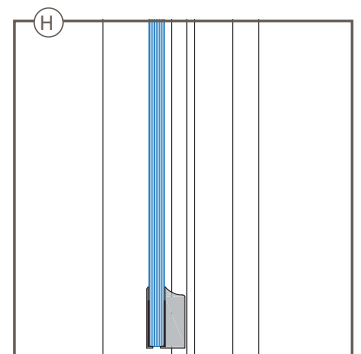
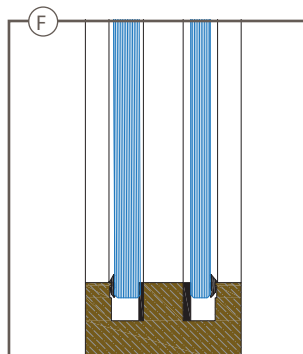
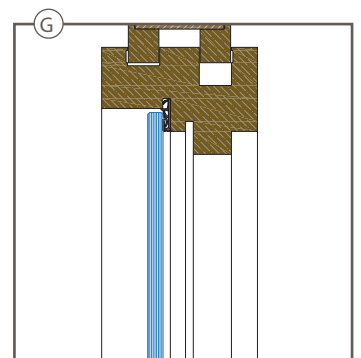
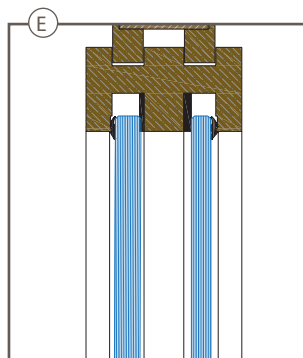
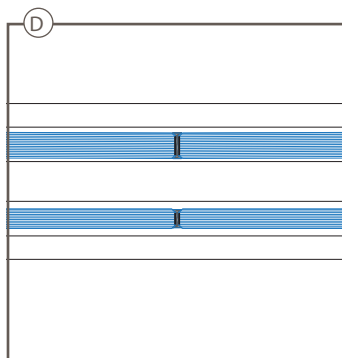
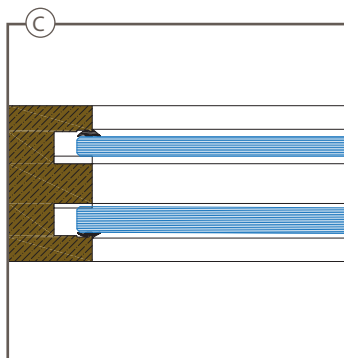
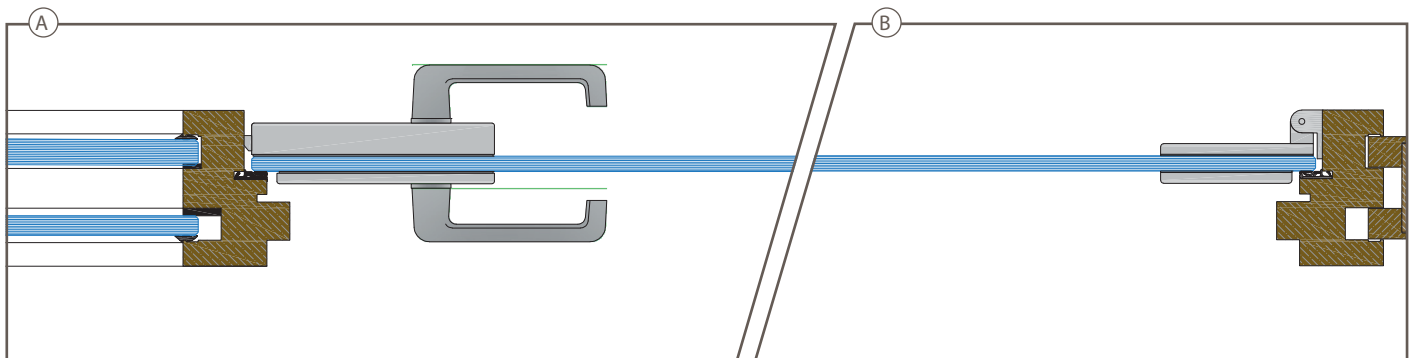
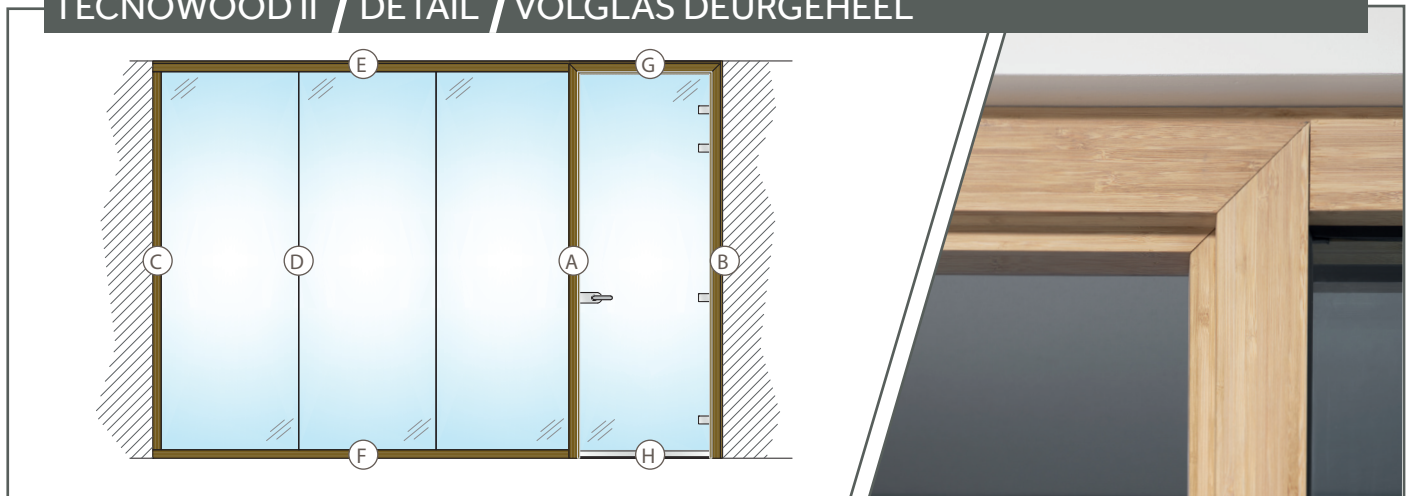


TecnoWood II is een dubbel beglaasde houten wandstelsel, met de focus op transparantie en akoestiek. Gecombineerd met de volle TecnoLine systeemwand of met lichte binnenwanden (gyproc, ytong,...), is deze wand een perfecte oplossing om de ruimte in te delen met volle en glazen systeemwanden. Volle side-pressed bamboe-profielen staan garant voor een verhoogde akoestiek en laten zich zelfs naturel (onbehandeld) toepassen. De glaspanelen worden in het profiel afgerubberd. De modulatie wordt per project, per wandgeheel bepaald. Waarbij altijd gestreefd wordt naar een evenredige verdeling, met maximale breedte van de glasplaat. Het deurenkader is geschikt voor zowel een vol, volglazen als een kaderdeurblad.

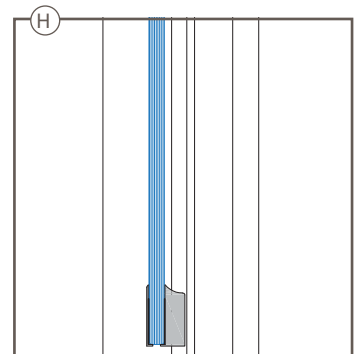
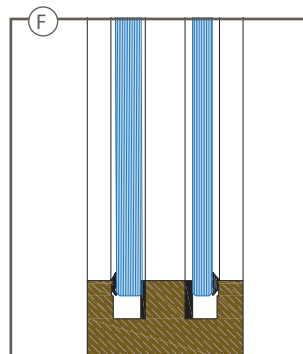
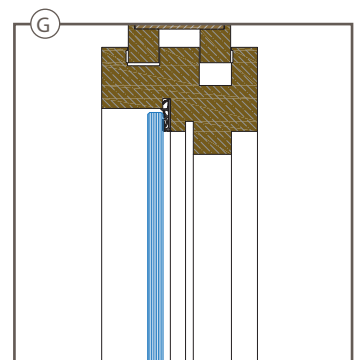
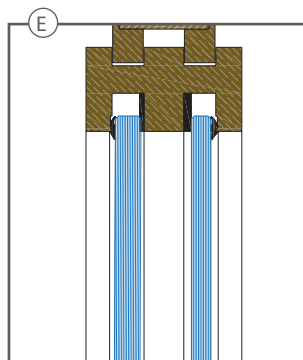
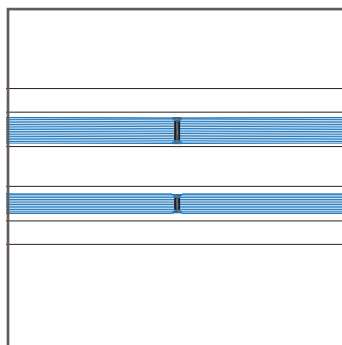
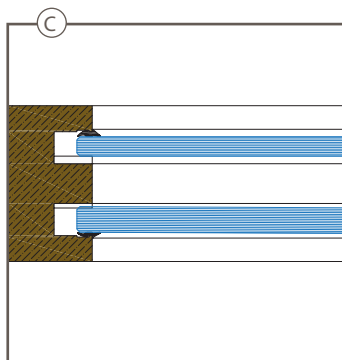
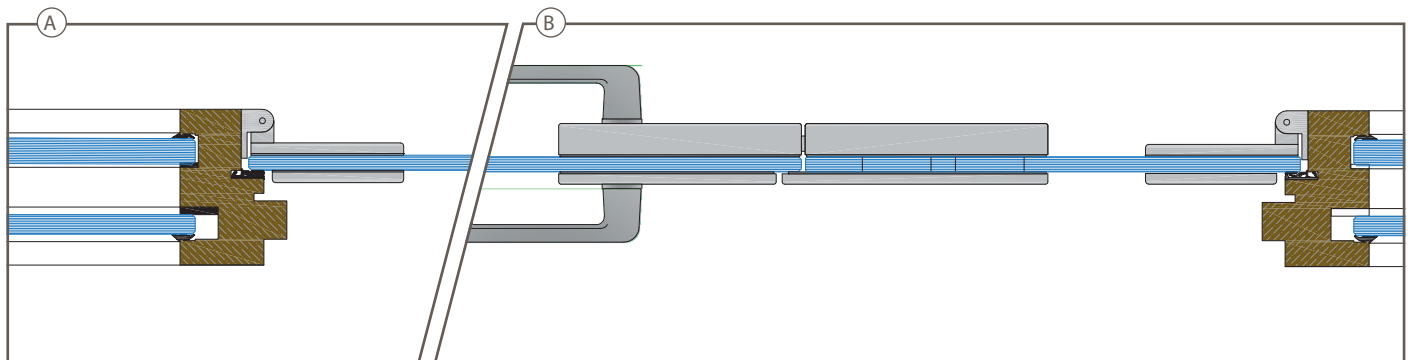
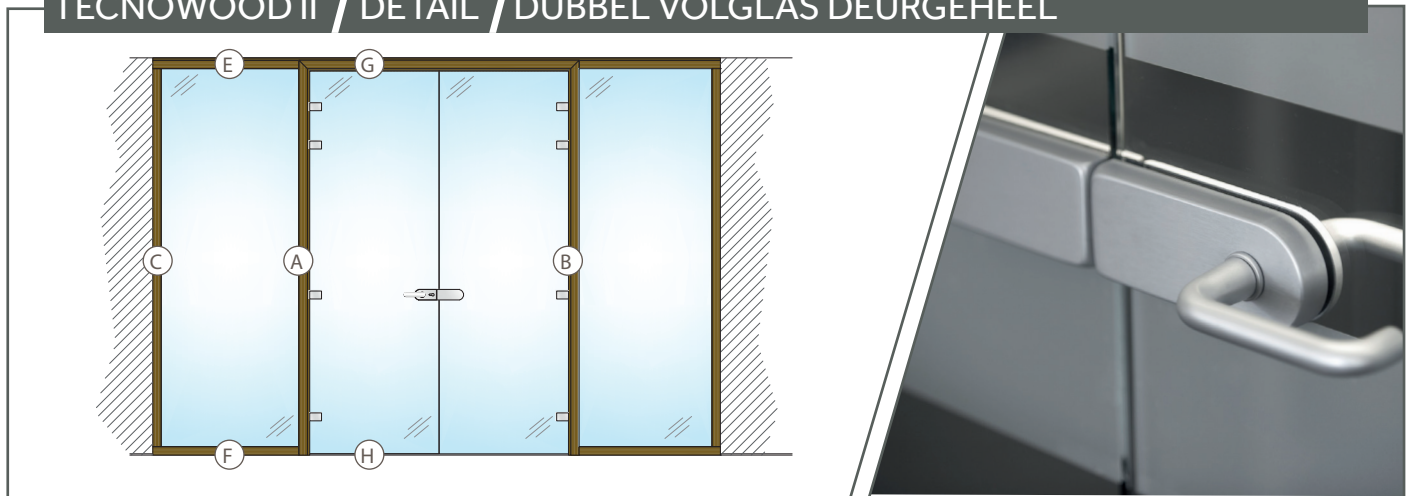
WANDDIKTE	bamboe side-pressed U-profiel, 102mm				
GLASTYPE		≤ 2.350 mm	≤ 2.600 mm	≤ 2.800 mm	≤ 3.100 mm
	gelaagd	55.2 + 55.2 55.2 + 55.2A 55.2A + 55.2A	66.2 + 66.2 66.2 + 66.2A 66.2 + 55.2* 66.2A + 55.2* 66.2A + 55.2A 66.2A + 66.2A	66.2 + 66.2 66.2A + 66.2A 66.2A + 55.2A 66.2A + 66.2A	66.2 + 88.2 66.2A + 88.2 66.2A + 88.2A* 66.2 + 88.2A 88.2 + 88.2 88.2A + 88.2 88.2A + 88.2A
MODULEOVERGANG	minimale glas-glasverbinding, diverse uitvoeringen mogelijk (plexi, bamboe,...)				
MODULATIE	tot circa 900 mm				
WANDHOOGTE	maximaal circa 3.000 mm				
ZICHTPROFIELEN	bamboe side-pressed, onbehandeld. In optie: eik, rubberwood				
PLAFONDPROFIELEN	bamboe side-pressed, U-profiel: 102 x 55 mm				
VLOERPROFIELEN	bamboe side-pressed, U-profiel: 102 x 55 mm				
ISOLATIE	n.v.t.				
DEURKADER	geschikt voor een vol, volglas deurblad en bamboe kaderdeurblad (enkel en dubbel glas)				
OPTIONEEL	inbouw/opbouw deurdranger / onzichtbare scharnieren / valdorpel / elektrische sloten				
PROFIELKLEUR UIT VOORRAAD	bamboe side-pressed, onbehandeld				
GELUIDSISOLATIE	41 dB tot 46 dB*				
BRANDWEERSTAND	EI 00				

* Geluidsrapport beschikbaar

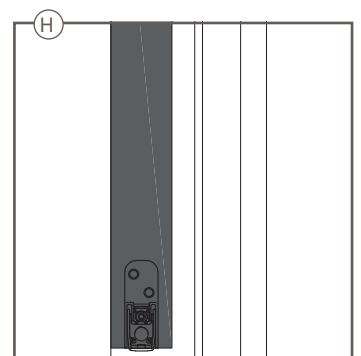
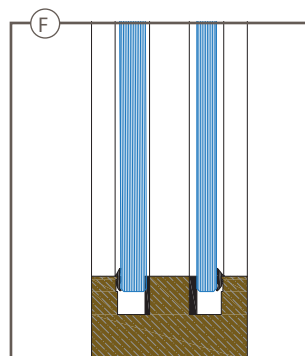
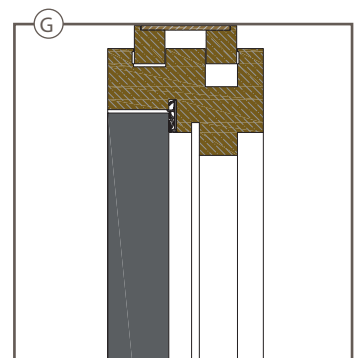
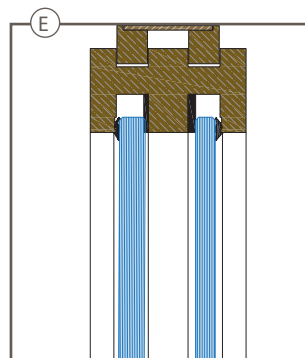
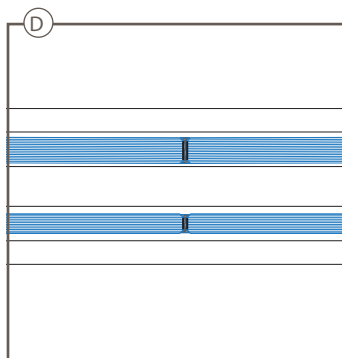
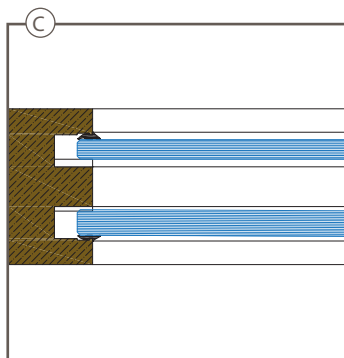
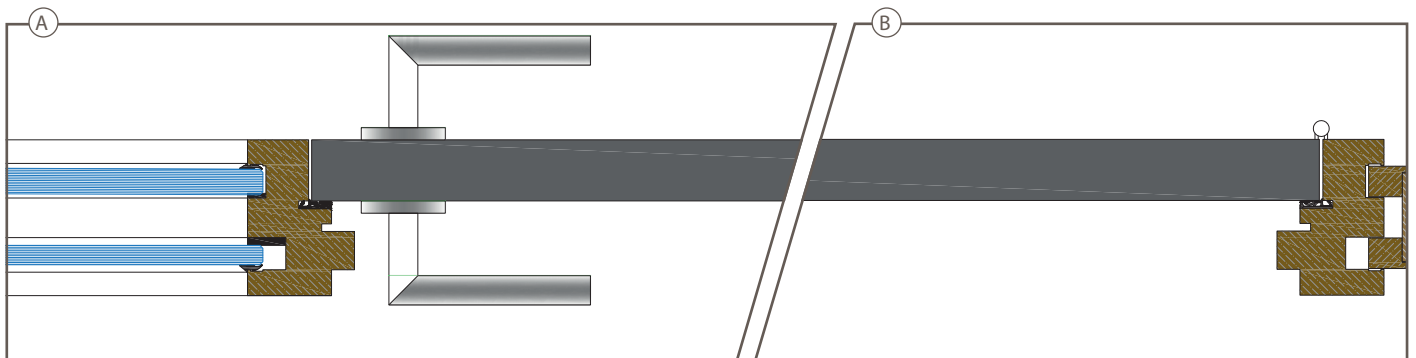
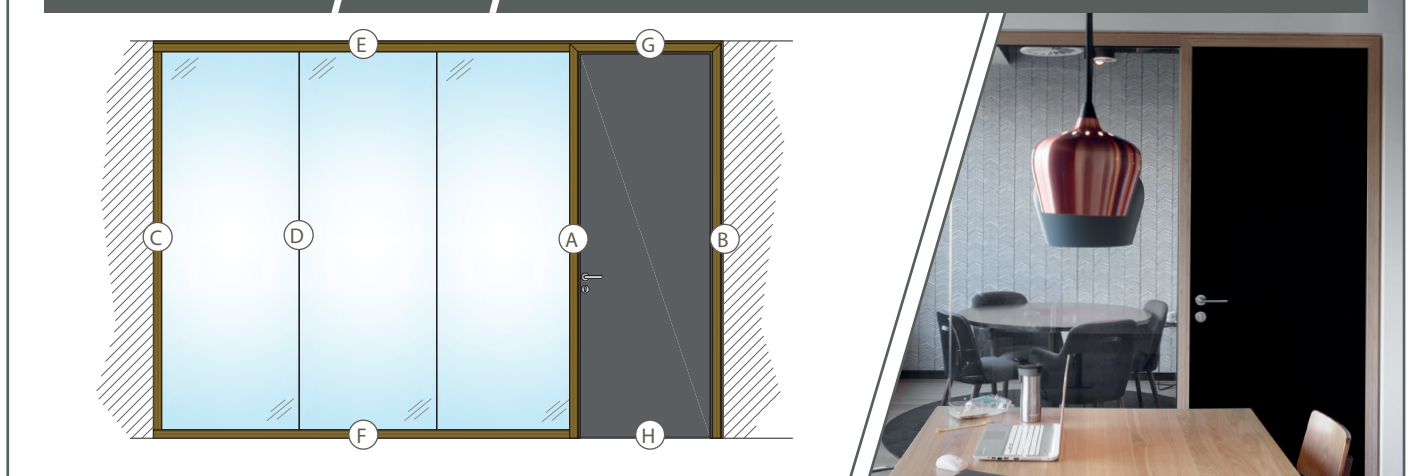
TECNOWOOD II / DETAIL / VOLGLAS DEURGEHEEL



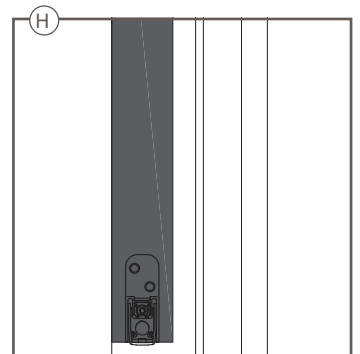
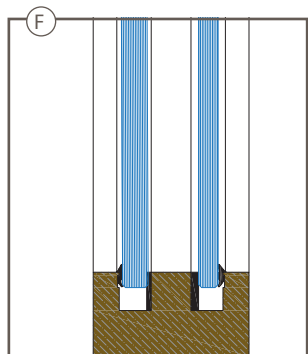
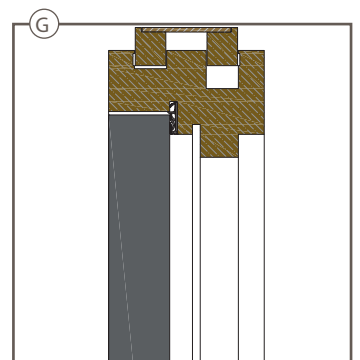
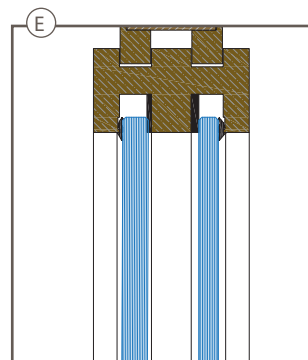
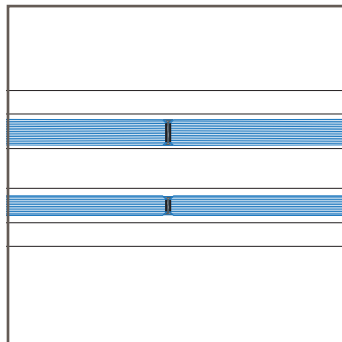
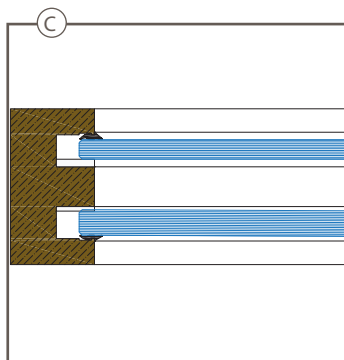
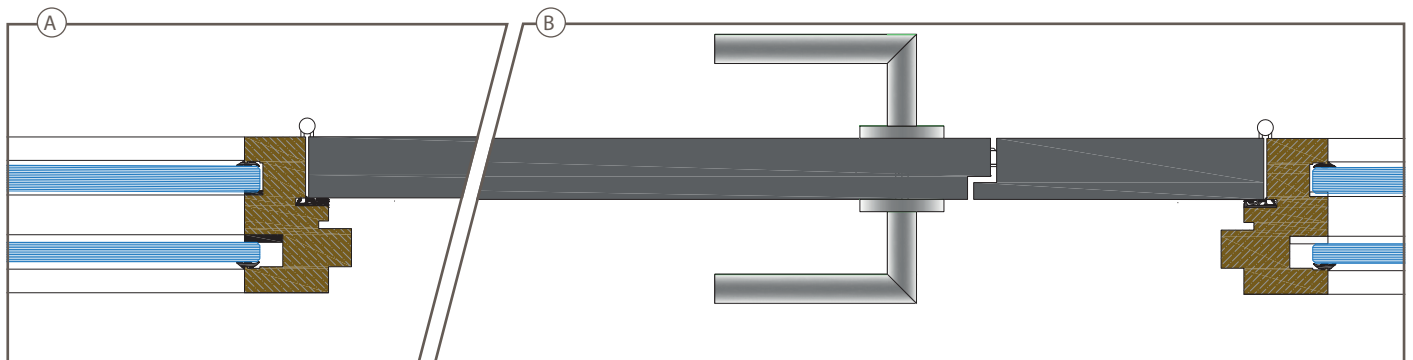
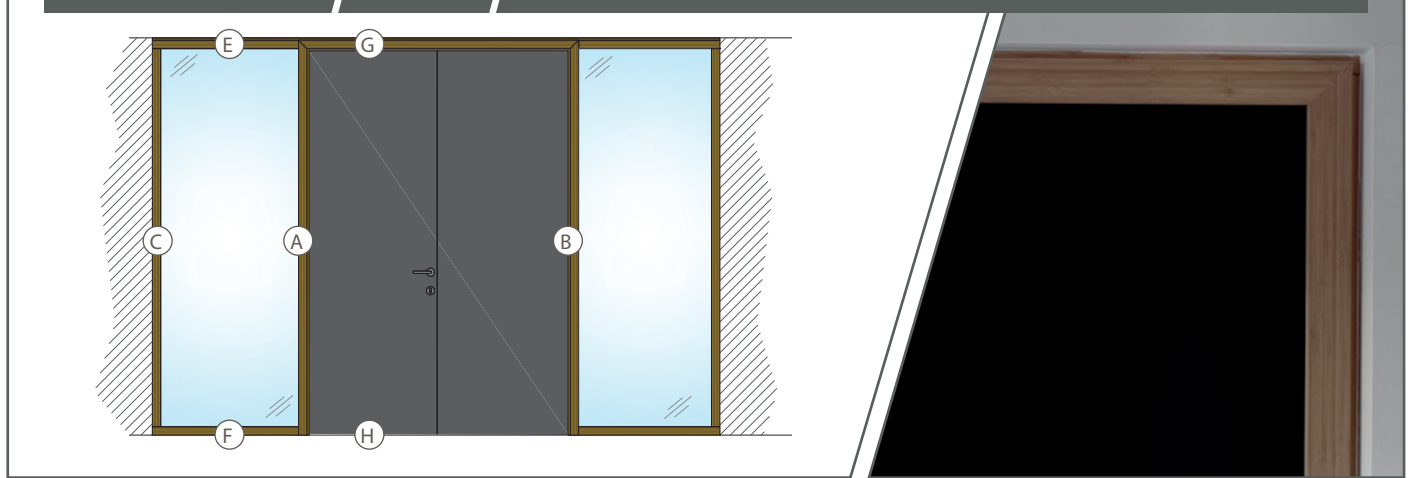
TECNOWOOD II / DETAIL / DUBBEL VOLGLAS DEURGEHEEL



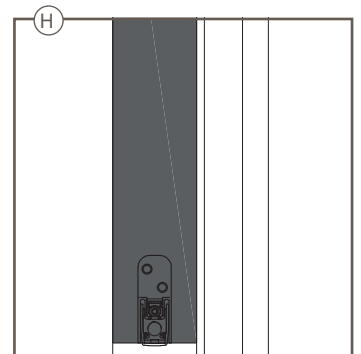
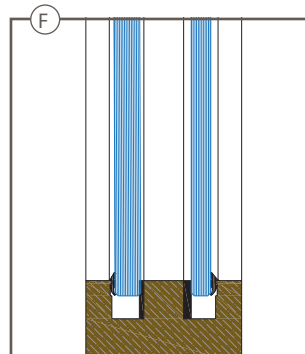
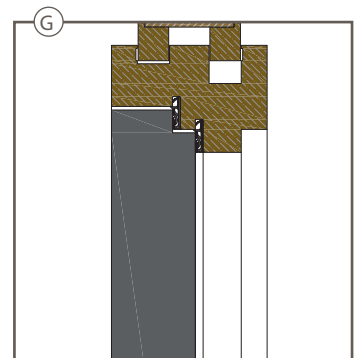
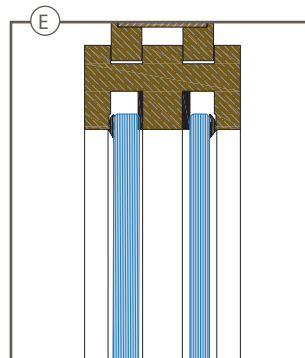
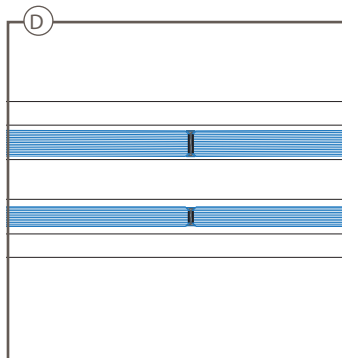
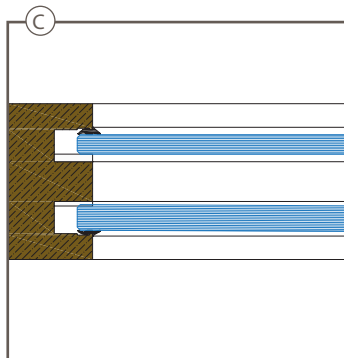
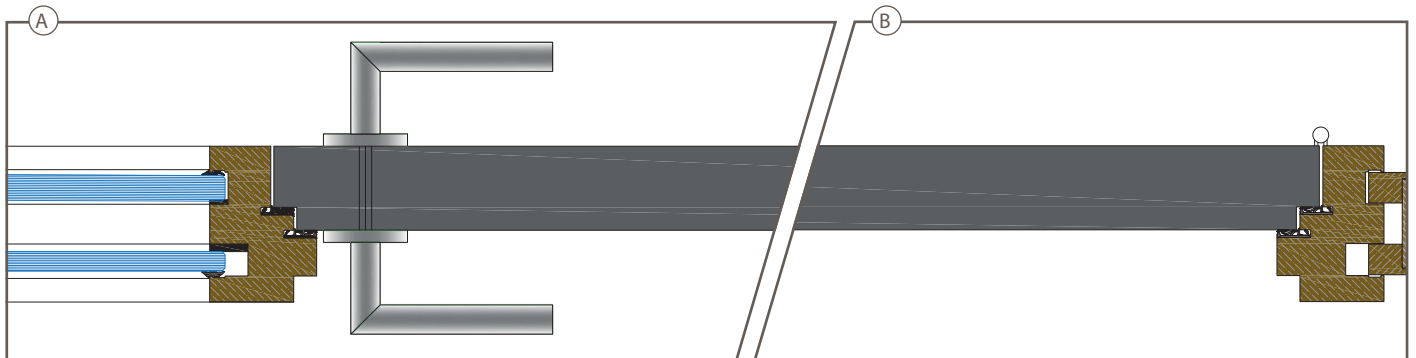
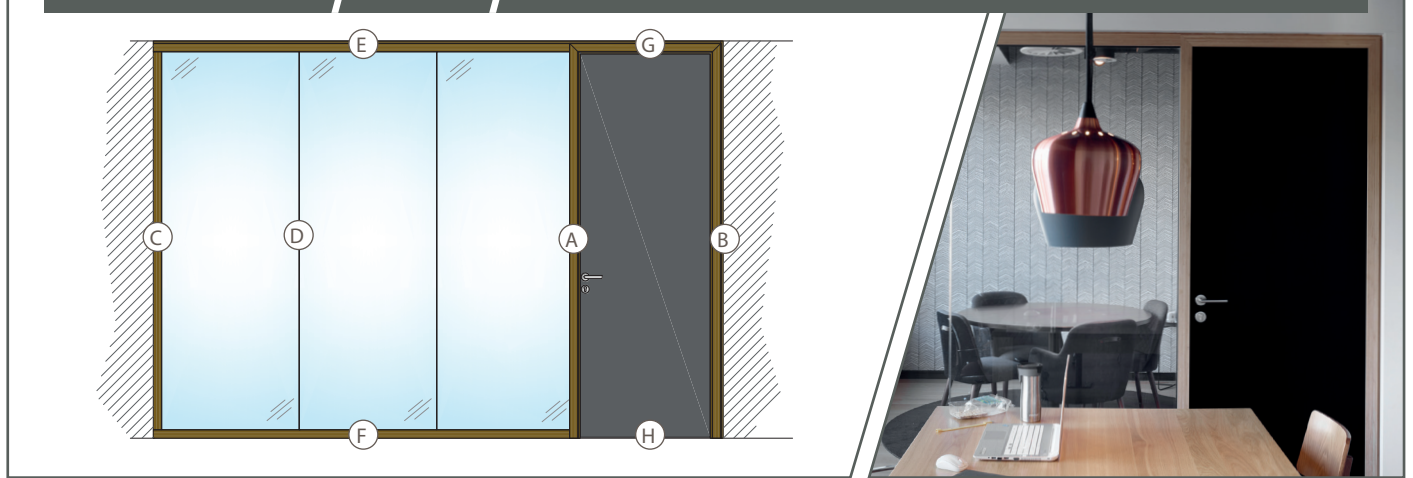
TECNOWOOD II / DETAIL / VOL DEURGEHEEL - ENKELE AANSLAG



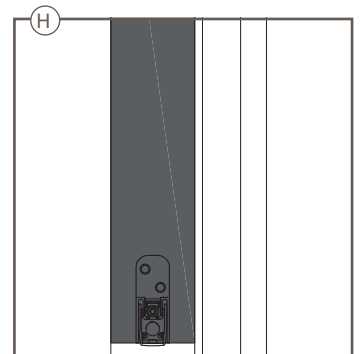
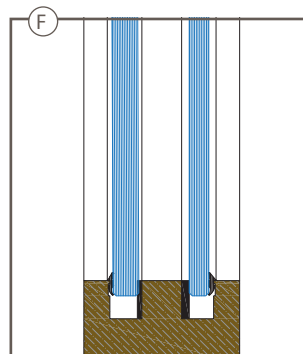
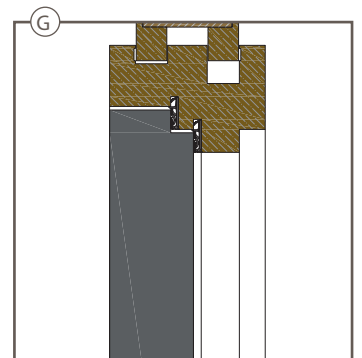
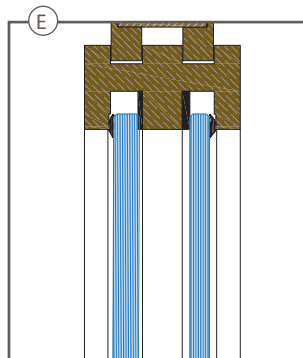
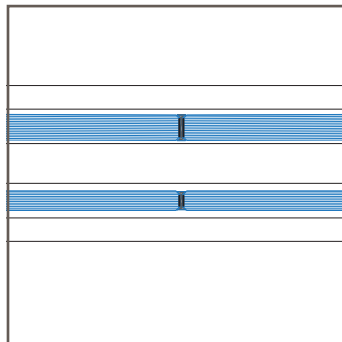
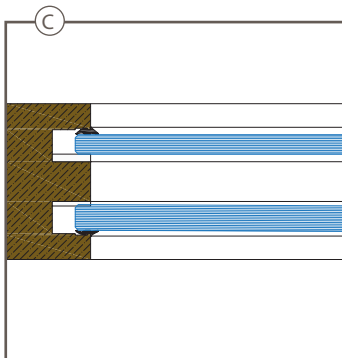
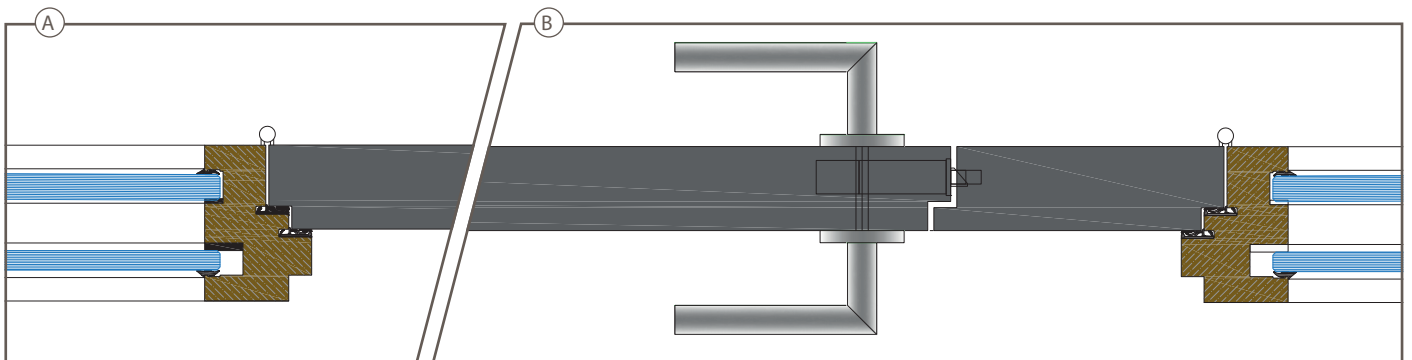
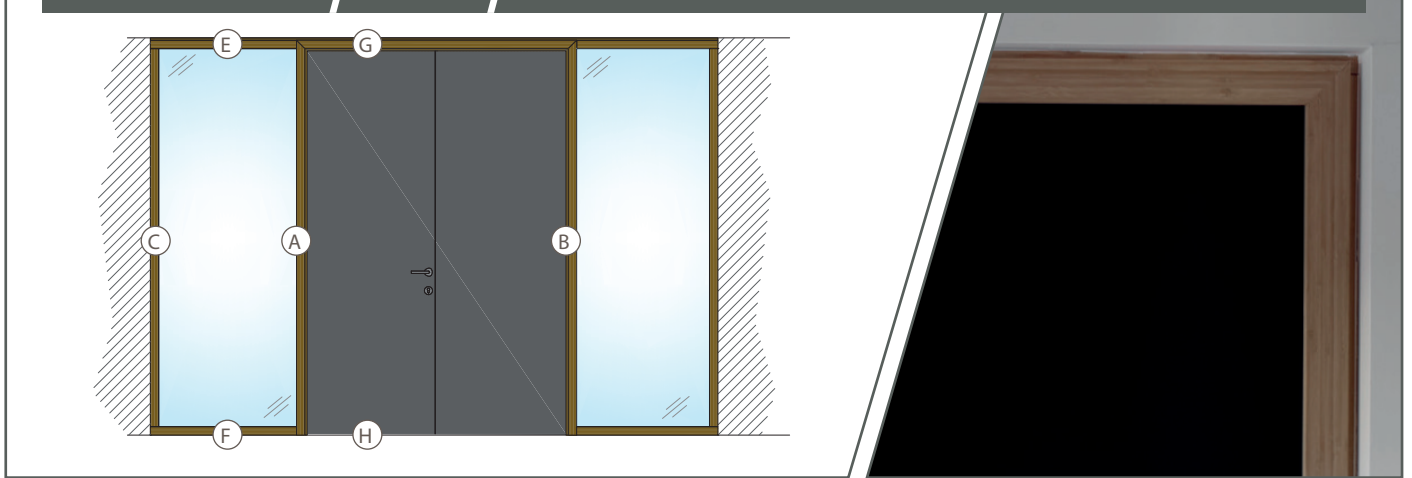
TECNOWOOD II / DETAIL / DUBBEL VOL DEURGEHEEL - ENKELE AANSLAG



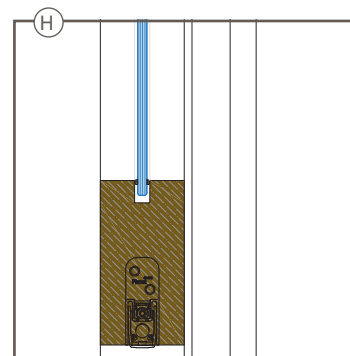
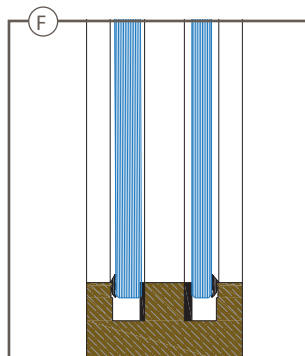
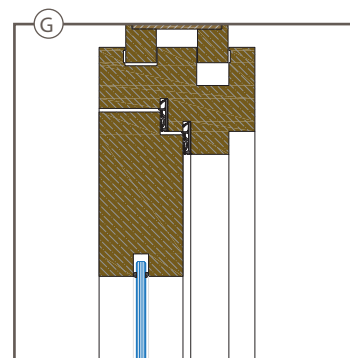
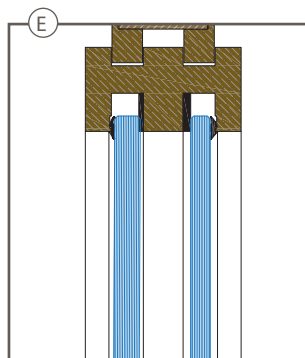
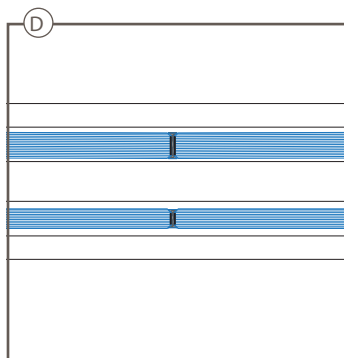
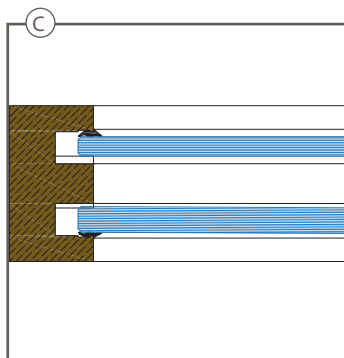
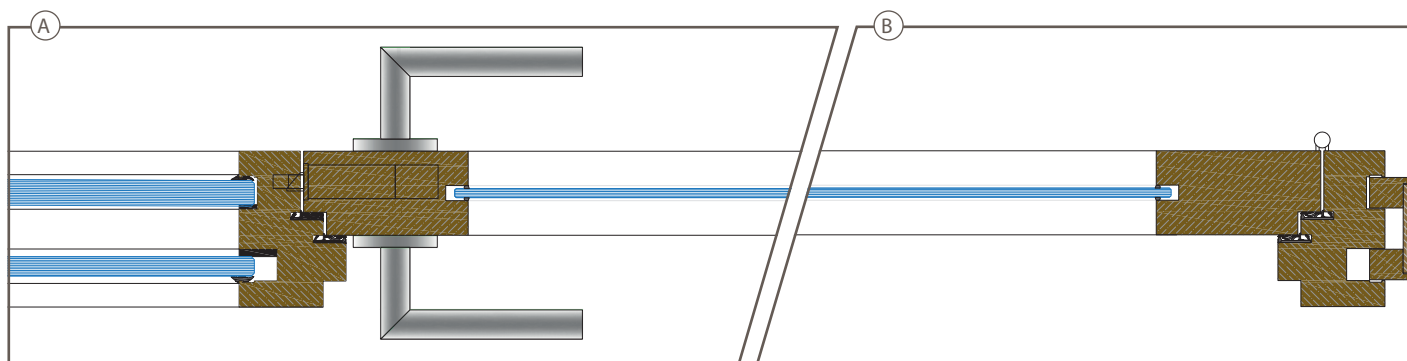
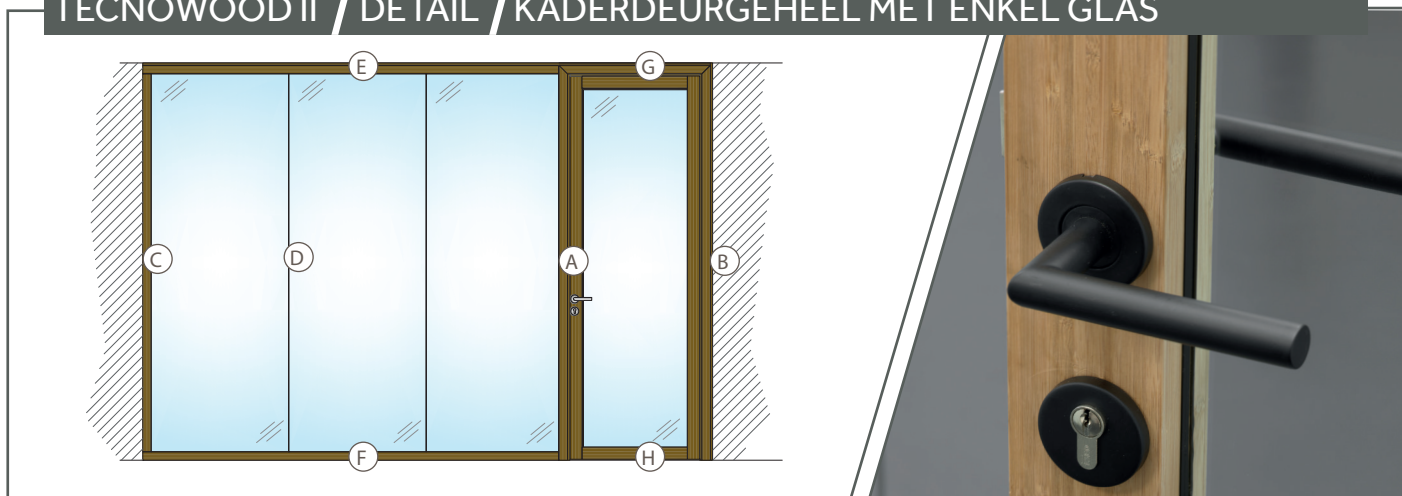
TECNOWOOD II / DETAIL / VOL DEURGEHEEL - DUBBELE AANSLAG



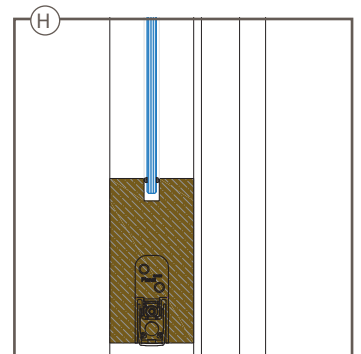
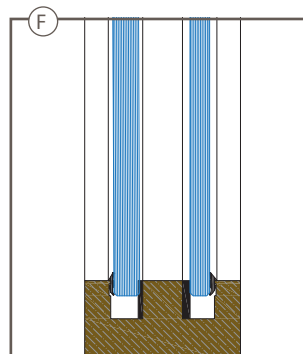
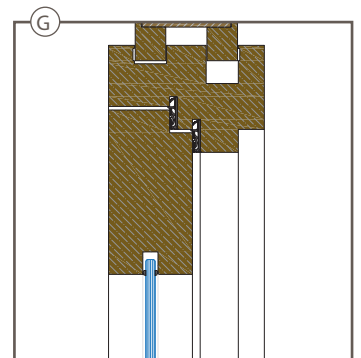
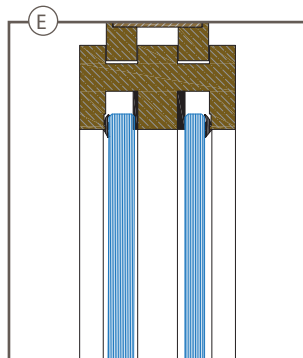
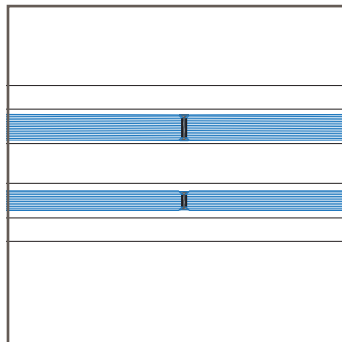
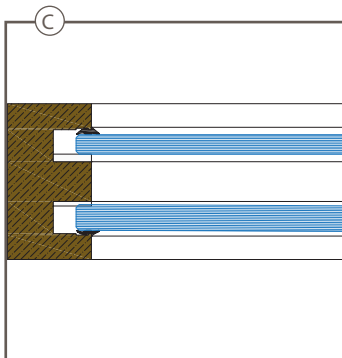
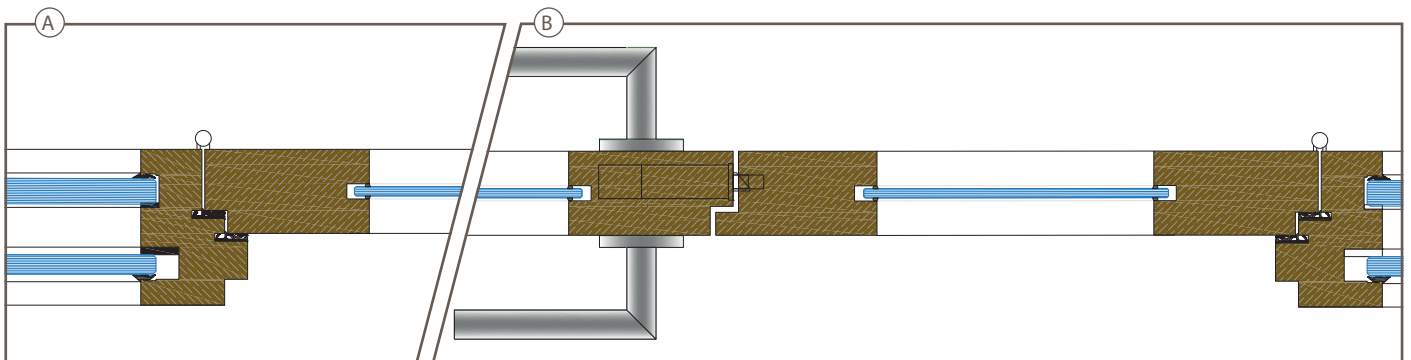
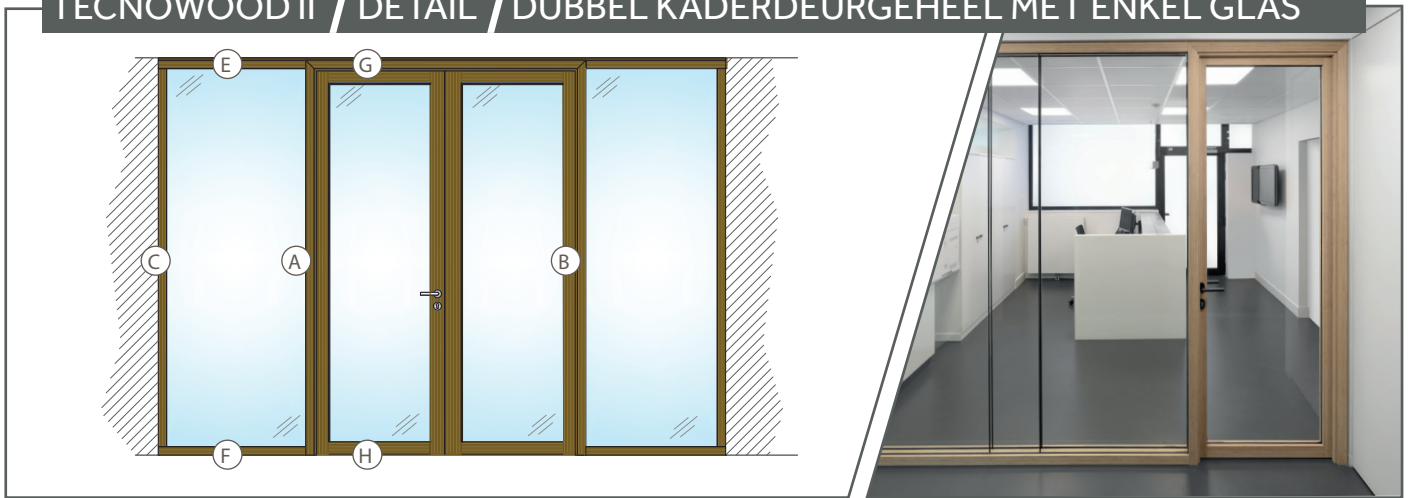
TECNOWOOD II / DETAIL / DUBBEL VOL DEURGEHEEL - DUBBELE AANSLAG



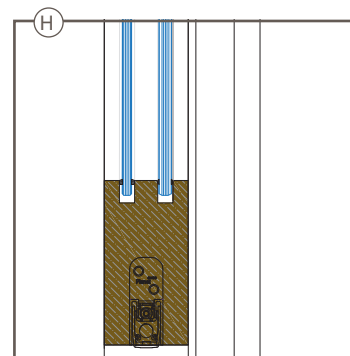
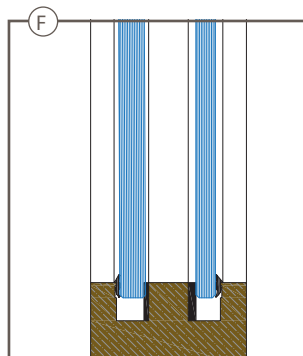
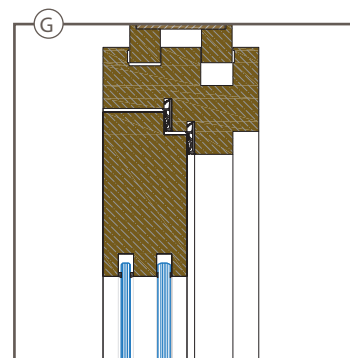
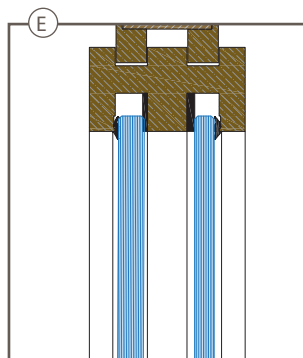
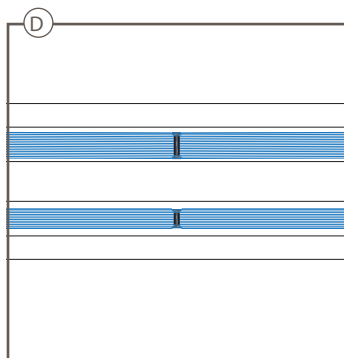
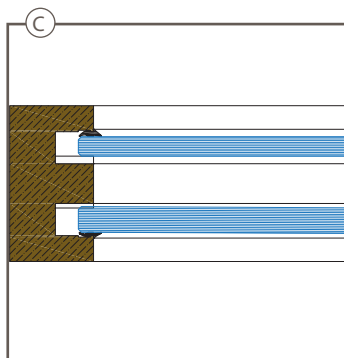
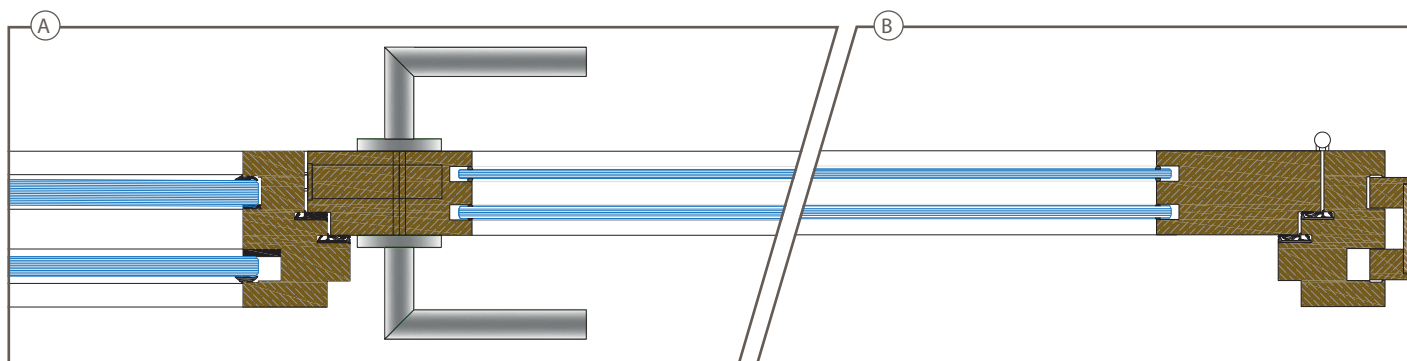
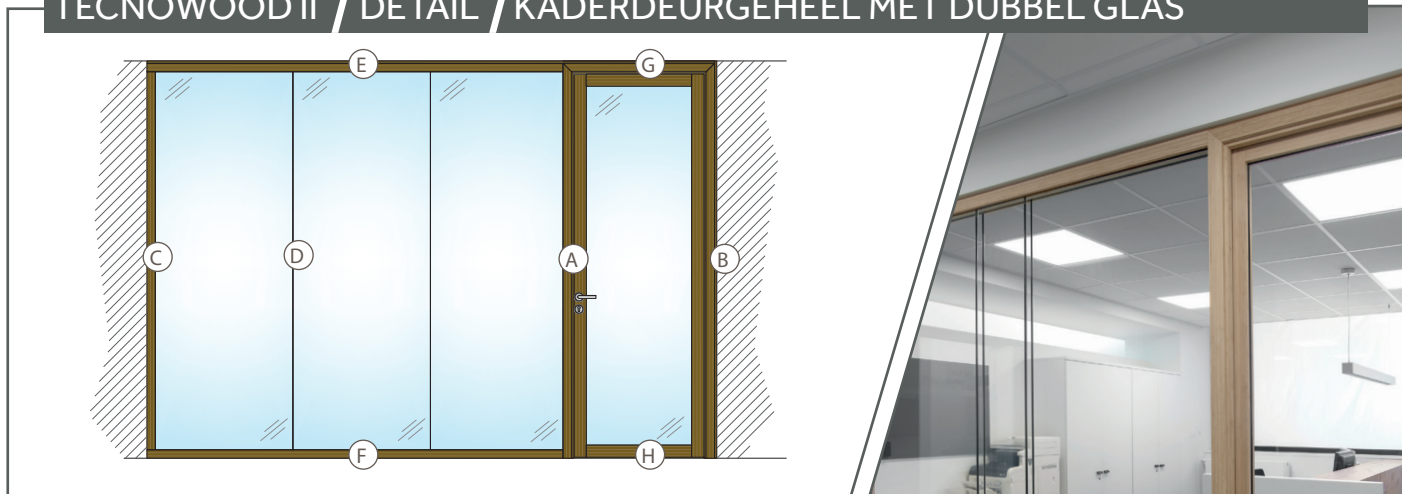
TECNOWOOD II / DETAIL / KADERDEURGEHEEL MET ENKEL GLAS



TECNOWOOD II / DETAIL / DUBBEL KADERDEURGEHEEL MET ENKEL GLAS



TECNOWOOD II / DETAIL / KADERDEURGEHEEL MET DUBBEL GLAS



TECNOWOOD II / DETAIL / DUBBEL KADERDEURGEHEEL MET DUBBEL GLAS

